



# 2022 Annual Impact Report

For period July 1, 2021 - June 30, 2022



A safe place to heal and find hope for a better life.

# Table of Contents

Fiscal year 2022 (July 1, 2021-June 30, 2022) was a year when we considered the future of our physical infrastructure as well as worked on efforts to ensure our services are equitable for all the children, adults, and families we serve. This Annual Report shows how your support has provided hope and healing to children and families in Rhode Island.



2-3

**Accomplishments**



4-5

**Residential Services**



6-7

**Outpatient Services**



8-9

**George N. Hunt  
Campus School**



10

**Impact at a Glance**



11

**Leadership**



12

**Children's Friendship Award**



13

**Financials at a Glance**



14-19

**Donors at a Glance**

# Dear Friends,

We are honored to present our 2022 Annual Impact Report. We are proud to share how our Residential Services Building Bridges team prioritizes finding family for youth in our care. We believe that every child deserves lifelong connections. So many of the youth who come through our doors have been “in the system” for years and have lost touch with their families. Our team helps to reconnect youth with family members. The difference this makes is nothing short of astounding. Read about this on page 4.


Our Outpatient Department helps parents of LGBTQ+ youth learn to accept and understand their children so they can better meet their needs — see page 6. In addition, you will learn about our continuum of care through the lens of client stories and quotes throughout the program pages of this report.

We were not immune to the workforce crisis in the human service field and had to limit capacity in some programs during the Fiscal Year 2022 to ensure youth safety. Despite this, we continued to work toward improving our services. Our Performance Quality Improvement (PQI) Team is top notch. They collect relevant data and conduct outcomes research and program evaluations to highlight our strengths and areas for improvement. We strive for excellence and recognize the need to use quality data to make meaningful change.

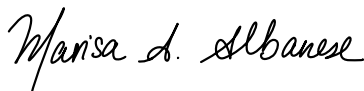
We are also excited about changes to our North Providence campus. The Building and Grounds Committee, which includes our Facilities Team, used the Master Plan to create a five-year schedule with four major projects planned for FY 2023. You can look forward to a new modern entrance to St. Mary’s, among other projects. Stay tuned to St. Mary’s social media, website, emails, and newsletters for more on those projects.

Finally, we would be remiss if we did not acknowledge our village: our clients, staff, Board of Directors, volunteers, individual donors, corporations, and foundations. We are blessed to have the support and generosity of so many who really make our work possible. Our village works together in ways big and small to foster resilience in those we serve, unlock their potential, and support their healing. We are ever grateful.

Wishing you peace and health,



Carlene Casciano-McCann  
Executive Director



Marisa A. Albanese  
President, Board of Directors

“We are blessed to have the support and generosity of so many who really make our work possible. Our village works together in ways big and small to foster resilience in those we serve, unlock their potential, and support their healing.”

– Carlene Casciano-McCann  
Executive Director





# Accomplishments

At St. Mary's, people are the center of our work, whether it be clients, donors, staff, or the Board of Directors. Here are some ways we helped people this year and improved our programming.



## Residential Services

In Residential Services, a new Building Bridges Family Finding Team was developed, which successfully found biological family members for 10 youth served by St. Mary's – learn more about this on page 4. Five youth were successfully trained in the interviewing and hiring process so they can take part in hiring decisions along with St. Mary's Residential Supervisors. With the help of the Facilities Department, renovations of the Hills House kitchen and the Harding House lower level youth "Chill Zone" were completed as was phase two of the Mauran House HVAC project, which was funded by a Community Development Block Grant.



## Outpatient Department

Partnerships were created and strengthened with outside organizations, such as Progreso Latino, Sojourner House, and Rhode Island College, to ensure adult Outpatient services are known and accessed. Close to 150 people from St. Mary's and outside agencies attended the virtual Shepherd Training Series which shared the impacts of sexual abuse and sex trafficking along with treatment ideas. The Department provided three presentations about Equine Therapy with the last one being broadcast on public television on PEG-RI.



## George N. Hunt Campus School

Enrichment programming was built into the school day to bring Equine therapy, theater classes, kickboxing, yoga, and music production to students. The School celebrated its Spring Formal Dance for all Junior High and High School students. New Core curriculum was reviewed and selected for the upcoming school year. School positions and roles were restructured to optimize school operations and a two-year Staff Professional Development Plan initiative was begun. A Junior and High School master schedule was also developed to maximize student learning.



## Performance Quality Improvement (PQI)

PQI researched treatment outcomes and completed program evaluations to provide data to make program improvements. PQI worked with HR to improve employee onboarding and exiting including implementing changes to the Exit Interview Process which increased participation by 383%. A PQI Employee Retention Committee began working. A poster was presented at the Association of Children's Residential & Community (ACRC) services national conference about how St. Mary's measures post-discharge outcomes in Residential Services interventions to help us improve program effectiveness.



## Diversity, Equity, and Inclusion

The Diversity, Equity, and Inclusion Committee was formed and began the work to implement Culturally and Linguistically Appropriate Services (CLAS) Standards while also working on other staff-driven diversity initiatives.



## Development and Communications

On 401 Gives Day, St. Mary's raised more than \$33,000 from 198 donors. Out of 500 organizations, the agency ranked 12th in donors and 16th in amount raised. The Children's Friendship Awards event, where we honored Elizabeth H. Ingraham and Episcopal Charities of Rhode Island, raised more than \$111,000. St. Mary's supporters donated almost \$60,000 in presents for the children and families we served during the holiday season. And we won first place in the Red Sox Foundation Impact Awards, based on supporters' voting, receiving a \$10,000 donation on the field at Fenway.



## Human Resources

To improve staff retention, Human Resources initiated a professionally-led analysis of the agency's compensation structures against the current market and turnover in order to develop a compensation philosophy and policies to create a career and compensation ladder. As part of this and based on staff feedback, St. Mary's increased PTO time from 16 to 20 days for hourly employees.



## Nursing

Nursing enhanced medical care for those we serve by using a PQI Medical Records Audit to identify training and work-flow improvements. Nursing now provides full-day support to the School. Internal communications efforts such as employee testimonials, newsletters, Q & A Nursing groups, and one-on-one meetings, helped to increase the number of employees who were vaccinated against COVID-19 and four vaccine clinics were held on-site.



## Information Technology

The IT Department rolled out new networking features and decreased security risks by replacing an outdated server. An encrypted email platform was instituted to allow users to send out sensitive data and prevent attackers from intercepting communications. A BestNotes Client Portal was launched, allowing clients to access necessary forms. New 2-factor email authentication also reduced the risk of hacks for the agency.



## FY2022 Recognitions

Received a **Wellness Award at the Superior level from Blue Cross Blue Shield of Rhode Island** for promoting a healthy work environment.

Designated as a **Recovery Friendly Workplace through a Governor's Initiative** which empowers workplaces to support people recovering from substance use disorder, allowing the agency to acquire four NARCAN Rescue Kits.

**Re-certified as a Blue Cross Blue Shield of Rhode Island LGBTQ+ Safe Zone** for promoting safe, affirming, and inclusive care.



# Residential Services

Residential Services provides treatment for youth ages 6-18 including a full range of individual, group, and family clinical services. Five houses on our campus provide living space for up to 37 youth at a time. Three houses are classified as Psychiatric Residential Treatment Facilities offering intensive inpatient services to youth with various mental health issues. One house is a hospital step-down or diversion program and the final house offers assessment and stabilization services for youth. Our Residential Services are based on the principles of the national Building Bridges Initiative which ensures that services and supports are family-driven, youth-guided, strength-based, culturally and linguistically competent, evidence and practice-informed, and consistent with the research of sustained positive outcomes.

## Finding Lost Families For Children We Serve

When a child is in state custody, sometimes their parents and other relatives can become lost to them for a variety of reasons. It might be because they were separated from their family due to abuse or neglect or the parent has their own mental health and substance use issues so they can't stay involved when the system takes over. But St. Mary's knows that each child will have needs after they leave our services and connections to biological family can create important long-term mental and physical health benefits such as reducing loneliness and developing a sense of identity and belonging. Having family back in their lives can also give these children a lifelong support system with parents, siblings, grandparents, cousins, etc.

To help these children, St. Mary's Building Bridges Initiative (BBI) started its "Family Finding Team" in late 2021. Using every available, but free, method they can access, this Team searches Rhode Island and sometimes, the rest of the country, to find biological family members. It's a little like being a detective – perhaps they start with "The Last One (TLO)" report developed from software that searches DCYF databases for people who might be related to a child. Then they use social media and search court cases or even, real estate transactions, to find family. Once found, St. Mary's assigns a point person and, with the permission of DCYF, reaches out to the parents or other relatives.



In the 10 cases completed during FY 2022, not one parent has turned down the opportunity to reconnect with their child. For a few children, St. Mary's has been able to work with the parent so that their parental rights can be reinstated by a court and their child can live with them. While it doesn't always lead to permanent placement with the parent, it can sometimes lead to placement with other relatives or, at the very least, create communication with biological family that helps a child to feel less alone in the world and have a better chance for adult success.

\* Client details and photos have been changed to protect their identities.

## Client Story

Amy\* was born with exposure to cocaine, alcohol, and marijuana in utero. Her biological parent's rights were terminated due to neglect and Amy was placed in foster care and was adopted at age 3. Due to the early neglect, by age 5, Amy was struggling with behavioral issues and had difficulty modulating her emotions. She was hospitalized numerous times and received support when at home. But her challenging behaviors continued to worsen including one instance of fire setting and threatening to run away from home. Amy was hospitalized again and referred to St. Mary's which placed her in one of its Psychiatric Residential Treatment Facilities (PRTF). There she worked hard on accepting limits, building a positive relationship with her mother and peers, and learning ways to regulate her emotions.

Amy was discharged from the program to go back home where she then received aftercare support from our Building Bridges team to help with her transition. Her mother identifies several ongoing needs including support with behavior management and parenting strategies as well as help managing anxiety and utilizing coping skills. Our BBI team continues to help improve the parent-child relationship and develop the skills necessary to improve overall family functioning. The mother and daughter have worked hard on their goals, strengthening their relationship.



## “In Their Own Words

We asked some of the young people we serve what they think about our Residential Services. Here is what they said.

“They make me laugh and tell me that they are always there for me.”

“It's good because they treat me good. They give me hugs.”

“[A staff member] was looking for a place for me to do gymnastics and I appreciate it.”

What have you achieved since being at St. Mary's?

“[Meeting] my goals, like being safe. I feel more safe with staff.”

“I shared with my friends.”

“I got a job.”

Why should people donate to St. Mary's?

“Because some of us have no family to support us.”

“They should donate because kids like me need help with behavior.”



# Outpatient Services

The Outpatient Department, known as the Shepherd Program, provides a variety of services to support children, adults, and families impacted by sexual abuse, sexual exploitation, and other trauma, such as family violence and physical abuse. A variety of programs are available for people of all ages and include office-based counseling, Equine Assisted Psychotherapy, community-based treatment, clinical support groups, and trauma-informed training and consultation. All of the treatment and supportive services offered are specific to trauma.

## Helping Caregivers To Understand Their LGBTQ+ Children

LGBTQ+ youth are more than four times as likely to attempt suicide than their peers – not because of their sexual orientation or gender identity but rather because of how they are mistreated and stigmatized in society.

The Trevor Project is a suicide prevention and crisis intervention organization for LGBTQ+ youth. It's 2022 National Survey on LGBTQ+ Youth Mental Health found that 45% of these youth seriously considered attempting suicide in the past year including more than half of transgender and non-binary youth. At the same time, we also know that having at least one accepting adult can reduce the risk of a suicide attempt among LGBTQ+ young people by 40%.

Because of the impact of stigmatization on the youth's mental health and wellness, St. Mary's serves many LGBTQ+ youth and our programs have made a concerted effort to be a welcoming place for these young people. One of the issues we sometimes face is when a caregiver is struggling to accept their LGBTQ+ child's needs such as using different pronouns, changing their name, or general acceptance of who they are.

We've seen that this lack of acceptance can be devastating for young people already dealing with trauma in their lives – it destroys their sense of self and can make them feel unworthy. They can become suicidal or run away and seek out people who accept them but might not have their best interests at heart.

St. Mary's works hard to help caregivers better understand the needs of their LGBTQ+ children through therapy, support groups, and educational materials while working with both the young people and their caregivers together.



\* Client details and photos have been changed to protect their identities.



## Client Story

A teenager named Jasmine\* with special needs and an Individualized Education Plan (IEP), who was in a special program for educational and behavioral issues, sent a sexually explicit video to a classmate. This caused Jasmine's mother and school psychologist to contact the Department of Children, Youth, and Families (DCYF) hotline to seek services to help with the child's sexualized behaviors. This youth also struggled with self-care skills and needed many reminders and prompts to complete them. While Jasmine had not disclosed any sexual abuse, she still needed assistance so DCYF referred her to St. Mary's.

This teen was accepted into St. Mary's Supporting Adoptive and Foster Families Everywhere (SAFFE) program. As part of the 6-month program, Jasmine and her family were supported around Jasmine's sexualized behaviors. A Clinician and Care Coordinator met with the family weekly to provide individual and family therapy. In addition, St. Mary's also helped Jasmine's mother to complete its Families Impacted by Sexual Abuse (FISA) curriculum, a 12-to-14-week program designed to provide support and education to caregivers of children affected by sexual abuse.



## “In Their Own Words

We asked some of our clients what they thought about our Outpatient Services. Here is what they said.

“St. Mary's has been crucial in helping our family learn to cope with life after trauma. My husband and I completed group sessions with [our child] where we learned strategies for parenting a child who has, unfortunately, experienced trauma. I'm most proud of my daughter for disclosing to me what happened to her and the progress she is making as she opens up to her therapist at St. Mary's. Most importantly, [my daughter's therapist] has validated my child's experience and has offered truly valuable insight during their sessions. The staff at St. Mary's offers knowledgeable, compassionate, and professional care to families going through unimaginable circumstances.” — a parent of a child served by St. Mary's

“They're really helpful, people relate to you and help you try to solve stuff. [I'm really proud] that I can be open with people. I like that [they] bring the parents in and try to make them understand some things are normal and they don't judge you. [You should donate to St. Mary's] so they can help kids have a childhood especially those who don't have a childhood because of what's going on at home.” — a child served by St. Mary's



# George N. Hunt Campus School

The George N. Hunt Campus School provides highly structured, individualized instruction, and therapeutic services to students with learning, social, emotional, and behavioral challenges. The school serves St. Mary's Residential Services youth. Other students can also be referred to the campus school by Local Education Agencies to attend as day students. Clinical and therapeutic support is provided to all students. Related services such as Occupational Therapy and Speech/Language services are available per the student's Individualized Education Plan (IEP). A reading specialist is available for education evaluations and support to improve reading skills per the student's IEP. The school is licensed by the Rhode Island Department of Education as a year-round, out-of-district special education school for grades K-12.

## Helping Children Discover Their Passions Along With School Work

The George N. Hunt Campus School serves students with learning, social, emotional and behavioral challenges – both students coming from our Residential Services and Day Students from Rhode Island communities. Due to their challenges and past trauma, many of the children have struggled in school and are behind in their learning so teaching core subjects in ways that work for each child is very important. To ensure this requirement is fully met, the school used funding in FY2022 from the American Rescue Plan Act to purchase a new K-12 Common Core curriculum which is aligned to Rhode Island State Standards and will modernize the school's learning tracts to ensure its students are getting the best education possible.



While learning the core subjects is very important for our students, it is just as vital to help these children to find their interests and passions in life – to figure out what they want their lives to be long-term. To help our students find their passions we have been raising funds to offer elective classes in areas such as theater, music, kickboxing, yoga, etc., and make these classes an important part of the school day. In FY2022 a generous donation from Barry Sutcliffe of Bradford-Sutcliffe Insurance allowed for these classes and going forward, funds raised during the 2022 401 Gives Day will be used. The school is also seeking to connect with local artists to bring them in for classes with the students. An exciting project like this will happen in 2023 when a local muralist will teach classes and then paint a large mural on the side of the school building.

\* Client details and photos have been changed to protect their identities.

## Client Story

A 7th grader named Shanice joined the George N. Hunt Campus school when her behaviors and learning issues made it difficult for her to succeed in her District's school. She was exhibiting sexualized behavior, being inappropriate with peers, and lived with daily anxiety and PTSD. She was easily influenced by peers and needed help with impulsivity and setting boundaries for herself. Our School was able to assist Shanice because it offers a smaller class size, more one-on-one time with teachers and teaching assistants, and staff that understand her challenges and provided the services that would help her continue to learn.

Since being at the school, Shanice, who is now entering her senior year of high school, has developed increased self-esteem and believes more in herself as someone able to learn. She has shown strong leadership abilities when working in groups and worked well with peers. Because the school offers artistic elective classes, she has developed her artistic abilities and knows that she wants to focus in that area for her future job. Now, as she approaches her last year in School, Shanice is receiving transition assistance including interest testing to help her decide on her future. She is focusing on a career in Cosmetology and the school continues to help her plan for her days after high school including deciding where to study Cosmetology, helping her apply to study, and also obtaining future services for her that will allow her to be successful as an adult.

## “In Their Own Words

We asked some of our clients what they thought about our School. Here is what they said.

“When I first got here I did not know how to read and I know how to now.”

“They respect me and take me for walks. They helped me to trust people and helped me to calm down.”

“They help me with my coping skills. I'm proud of making goals and doing well in math.”

“They taught me to do better in school. I can count to 100. They also gave me socks when I needed them.”

“I've made it the most far in my work and they help me through my struggles.”

“I'm proud of doing better on my school work.”





# Impact at a Glance

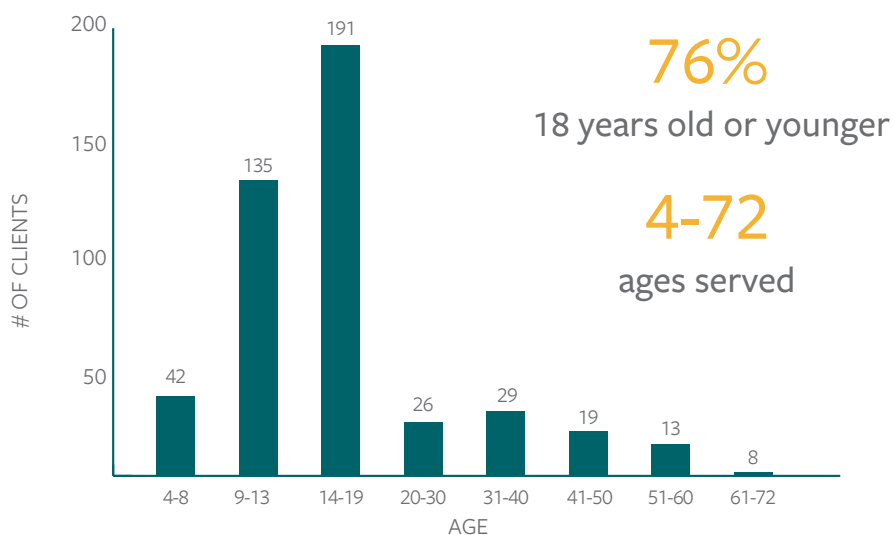
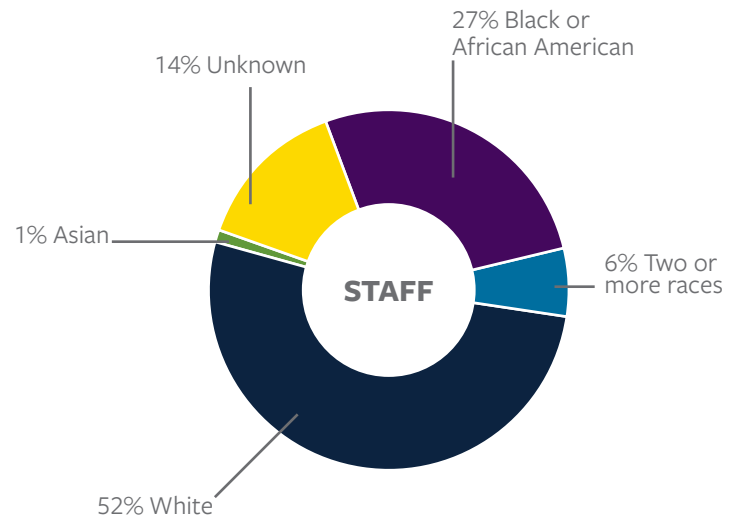
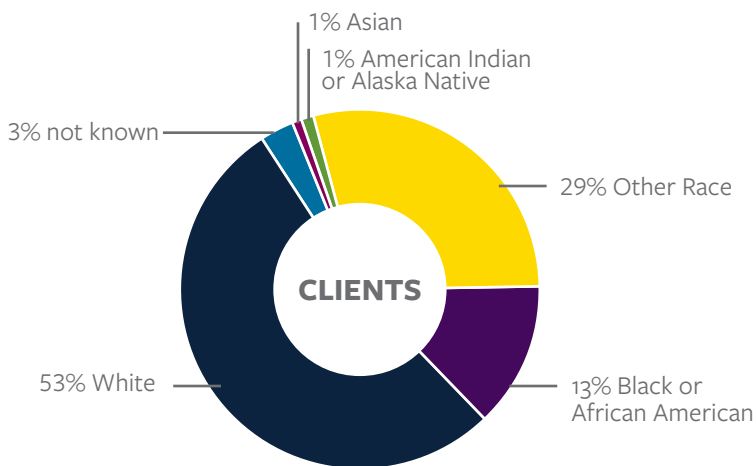
St. Mary's tracks statistical and demographic data about our clients and staff to ensure that our services are racially equitable and measure our performance. Below are some of these FY2022 statistics to show the impact of our services for Rhode Island families.

clients served\*  
**469**

female  
**75%** | male  
**25%**

RI cities & towns served  
**82%**

Also served towns in Massachusetts and Connecticut



\*This represents **individual** clients served. However, **many** clients access multiple agency services across multiple programs at any one time.





# Leadership

Carlene Casciano-McCann, Executive Director  
Mike Burgess, Residential Program Manager  
Jessica Clark, LICSW, Assistant Director, Outpatient Services  
Sharron Costello, Director of Human Resources  
Adeana Dunston, School Support Services Coordinator  
Nicole Froment, RN, Director of Nursing  
Susan Gale, Manager of Marketing and Communications  
Diane Long, School Administrator – George N. Hunt Campus School  
Anthony Maglione, Director of Finance  
Eric McDuffee, Director of Information Technology  
Linda Mobriant, Director of Operations and PQI  
Patricia Olney-Murphy, LICSW, Clinical Director, Residential Services  
Mike Paiva, Facilities Manager  
Victoria Picinich, Development Director  
Melissa Santoro, LICSW, Director of Outpatient Services

## Board of Directors (as of 6/30/22)

### Leadership

The Rt. Rev. W. Nicholas Knisely  
*Chair*

Marisa A. Albanese  
*President*

Scott Avedisian  
*Vice President*

Dennis Burton  
*Treasurer*

Harry Hanoian  
*Assistant Treasurer*

Elizabeth H. Ingraham  
*Secretary*

The Rev. Alvin Marcetti  
*Assistant Secretary*

### Members

Jeffrey P. Cascione  
Doris De Los Santos  
Glenn Grilli  
Mayor Charles Lombardi  
Aaron Nadich  
Lt. Governor Sabina Matos  
Judge Edward Newman  
John J. Schibler, Ph.D.  
Jeffrey Silcox  
Dolores L. Zompa

“We are focused on the future of mental health care for Rhode Islanders by ensuring our physical infrastructure will be up to the task and making sure our services are truly equitable and based on what the people we serve really require to improve their own lives.”

– Carlene Casciano-McCann  
*Executive Director*





# Children's Friendship Award

Each year during our Children's Friendship Award Event we recognize people and organizations that have made a significant difference for the children of Rhode Island. Learn about this year's winners below.

## Thank You to Episcopal Charities of Rhode Island

We'd like to recognize the amazing work done by one of our Children's Friendship Award winners – Episcopal Charities of Rhode Island! They provide food, shelter, and healthcare to those most in need. Over more than 70 years, Episcopal Charities has been behind the scenes helping St. Mary's to financially meet the rising mental health needs in RI. The Award was accepted by Director Betsy Fornal during our live event on June 23, 2022.

## Congratulations to Elizabeth H. Ingraham

We want to say a heartfelt thank you to someone who has made a huge difference in the work of St. Mary's. Elizabeth H. Ingraham, known as Betsy, worked at St. Mary's for 47 years and now serves as Secretary of the Board of Directors. During many years Ingraham actually lived on the agency's North Providence campus where she was on near 24-hour call for the youth. Literally hundreds of Rhode Island children have better lives today because of her work. She is especially deserving of one of this year's Children's Friendship Awards!

## Join Us on Social Media

St. Mary's can be found on the following social media. Please like and share our posts so we may reach more people.



[facebook.com/stmaryshomeforchildrenri](https://facebook.com/stmaryshomeforchildrenri)



[twitter.com/StMarysHomeforC](https://twitter.com/StMarysHomeforC)



[instagram.com/smhfc\\_ri/](https://instagram.com/smhfc_ri/)



[linkedin.com/company/st-mary-s-home-for-children/](https://linkedin.com/company/st-mary-s-home-for-children/)





# Financials

We rely on our supporters to ensure we can meet the needs of every child and family that comes to us seeking services. Below is a breakdown of our revenue and expenses. The financials shown represent unaudited amounts for the period July 1, 2021-June 30, 2022.

## TOTAL REVENUE AND SUPPORT

**Government Contracts and Grants**      \$9,397,851      **79.4%**

RI Department of Children, Youth, and Families

Victims of Crime Act (VOCA)

Municipalities

**Fee for Service/Third Parties**      \$11,883,260      **15.9%**

Insurance Companies and Co-pays

**Fundraising/Grants & Foundations**      \$567,963      **4.7%**

Private Foundation Support

Businesses and Individual Donors

Events

## TOTAL EXPENSES

**Program Services**      \$10,623,274      **88.8%**

Residential Services

Outpatient Services

George N. Hunt Campus School

**Administration**      \$1,037,767      **8.7%**

**Fundraising**      \$303,224      **2.5%**

## FISCAL YEAR 2022 TOTALS:

**Total Revenue:**      \$11,849,074

**Total Expenses:**      \$11,964,265

**Net Assets, End of Year:**      \$5,589,026

**Change in Assets:**      (\$115,191)





# Donors at a Glance

We gratefully recognize the following individuals, organizations, businesses, and foundations for monetary gifts received from July 1, 2021-June 30, 2022. You have supported our important mission. **Thank you!**

The donor listing is based upon cumulative giving during this period of time. Every effort has been made to ensure that this listing is accurate. We sincerely apologize if you find that your name has been omitted or listed incorrectly. Please contact the Development Office at 401-353-3900, x 262, to let us know of any errors or if you wish to be removed from public listings.

## Gifts of \$75,000-\$99,000

Shriners of RI Charities Trust  
The Champlin Foundation

## Gifts of \$25,000-\$74,999

Episcopal Charities of  
Rhode Island  
Estate of Marion Law  
Mrs. Elizabeth H. Ingraham

## Gifts of \$10,000-\$24,999

Mr. and Mrs. Robert Bergstrand  
Boston Red Sox Foundation  
Bradford-Sutcliffe Insurance  
Mrs. Petrina Caccia  
Mr. and Mrs. Harry A. Hanoian  
June Rockwell Levy Foundation  
Larry V. and Dorothy T. Egavian  
Foundation  
Nordson Corporation Foundation  
Rhode Island Foundation

## Gifts of \$5,000-\$9,999

Atlantis Comfort Systems  
Mr. and Mrs. Ralph Branca  
Ms. Carlene Casciano-McCann  
and Mr. Thomas McCann III  
Mr. Ernest L. Crivellone  
Dan's Management Company  
and Dunkin'  
Mr. and Mrs. Glenn Grilli

Hallam/ICS  
Mr. and Mrs. Donald Horton  
Maximus Foundation  
Mayor Lombardi Holiday  
Charitable Fund  
Mr. Thomas Melucci  
Naval Health Clinic New England  
Navigant Credit Union  
Ocean State Charities Trust  
Mrs. Barbara Papitto  
Rhode Island Foundation: Amelia  
Daggett Sheffield Fund  
Mr. and Mrs. Jeffrey Silcox  
Skills for Rhode Island's Future  
State of Rhode Island  
General Fund  
Trisha Lynch & Nikki Kavanagh  
& Friends Cookie Party  
Ms. Dolores L. Zompa

## Gifts of \$2,500-\$4,999

Ms. Marisa A. Albanese  
Anonymous  
Mr. Kenneth Antonizio  
Mr. and Mrs. Mark W. Brooks  
Mr. Dennis Burton  
Ms. Lori Butler and  
Mr. Wayne Reynolds  
Jeffrey and Eleni Cascione  
Diocesan Investment Trust  
Greystone Social Club

Grieco Automotive Group  
Ms. Jo Ann Harry  
Ida Ballou Littlefield  
Memorial Trust  
John Clarke Trust  
Mr. and Mrs. John F. Lombardi  
MAPFRE Insurance  
Mitzvah Matzos  
National Grid  
Pawtucket Credit Union  
Plates with Purpose  
Rhode Island Foundation:  
Carpenter Fund  
Rhode Island Foundation:  
Martha Cross Baker Fund  
Rhode Island Foundation:  
Kenneth J. and Hannah E.  
Dorney Fund  
Santoro Oil Company  
Savage and Luther Family  
Joan and Paul Sorensen  
St. Paul's Episcopal Church  
of Wickford  
The Murray Family  
Charitable Foundation  
Bally's Twin River Lincoln

## Gifts of \$1,000-\$2,499

Accardo Law Offices, LLP  
Amenity Aid  
Anonymous (3)  
Mr. Scott Avedisian

Mr. and Mrs. Norman D. Baker, Jr.  
Mr. and Mrs. John Biddick  
Mrs. Marilyn Bouclin  
Brennan, Recupero, Cascione,  
Scungio & McAllister, LLP  
Mr. and Mrs. Richard Casciano  
Charland, Marciano & Company,  
CPA's, LLP  
Citizens Private Wealth: Nicholas  
J. Caldarone Foundation  
Dr. Scott Colonna and  
Dr. Theresa Colonna  
East Greenwich Methodist  
United Church  
Emmanuel Episcopal Church  
Joan and Leonard Engle  
Foundation  
Mr. and Mrs. Harold J. Fera  
Ms. Pamela J. Finegan  
Frank Shatz & Co., Inc.  
Mr. and Mrs. Arnold Friedman  
Genesis Marketing Group Ltd.  
Mr. and Mrs. Christopher Hamblett  
Ms. Susan Hamel  
Ms. Kathleen Hickey  
J.H.Lynch & Sons, Inc.  
Mr. and Mrs. Brian W. Kirschner  
Mr. and Mrs. David Lynch  
Mr. Jean D. Madden, Jr.  
Mr. Matthew P. Marquez  
Ms. Mildred McLean



The Rev. and Mrs. Peter Michaelson  
 Adelina Mitchell  
 Mr. and Mrs. Jamison Mobriant  
 Atty. Aaron Nadich  
 Norton Healthcare Staffing  
 Otrando, Porcaro & Associates, Ltd.  
 Pajama Program RI Chapter  
 Mr. and Mrs. James V. Paolino  
 Pare Corporation  
 Parsons Capital Management  
 Paul King Foundry  
 Pear Ink Design  
 Providence Female Charitable Society  
 Providence Rotary Charities Foundation  
 Mr. Raymond J. Renaud  
 Res/Title LLC  
 Rhode Island Foundation: Evelyn Pierce Vories Fund  
 RI Laborers' District Council of L.I.U.N.A.  
 Roberts, Carroll, Feldstein & Peirce  
 Mr. and Mrs. Michael Sabitoni  
 Mrs. Carole Sammartino  
 Mr. and Mrs. Michael Sammartino  
 Ms. Karen Shea Feeney  
 Sierra Pacific Mortgage  
 Mr. and Mrs. Corey Smith  
 St. Thomas Episcopal Church: Greenville  
 Mr. Michael Testa  
 Trinity Episcopal Church  
 United Train of Artillery, RIM  
 Dr. Paul Van Zuiden  
 Michael Vendituoli  
 W D & Associates Inc.  
 Mr. and Mrs. Matt Wilcox

#### **Gifts of \$500-\$999**

Adelaide Dawson Lynch Memorial Trust  
 Cathy Adkison  
 Mr. and Mrs. Richard Albanese  
 Mrs. Vangy Auclair

Aurora Civic Association  
 Automated Business Solutions  
 Mr. and Mrs. Eben Bates  
 Mrs. Frederick Bissinger  
 CA Ferolie Group  
 The Rev. Mary Ann Canavan  
 Charter Oak  
 Christ Church in Lonsdale  
 Mr. and Mrs. Kevin Clavin  
 Canon Dena and Mr. Cleaver-Bartholomew  
 Atty. Stacie Collier and Mr. David Collier  
 Construction and General Laborers' Union 271  
 Matthew and Jeffrey Conway  
 Cross Insurance  
 Mr. Christopher D'Agostino  
 Mr. and Mrs. William Delmage  
 Delta Dental of Rhode Island  
 Detroit Collision Center  
 DiSanto Priest & Co.  
 Ms. Amy Doorley  
 Mr. and Mrs. Isidore A. D'Orsi  
 Dr. Day Care Learning Center  
 Elite Powerlifting Federation  
 Ferolie Corporation  
 Ms. Nicole Froment  
 Mr. and Mrs. Gary Furtado  
 Ms. Susan Gale  
 Ms. Danielle Gebrayel and Mr. Matt Martineu  
 Mr. and Mrs. Anthony A. Geruso  
 Gilbane Building Company  
 Ms. Donna M. Gregson  
 Mr. and Mrs. Donald E. Hare  
 Dr. and Mrs. David R. Heimbecker  
 Ms. Courtney Horley  
 Iacoi Law  
 Isabella Wardwell Charity Fund  
 Kahn, Litwin, Renza & Co. Ltd.  
 Mr. and Mrs. Chad Kavanagh  
 Ms. Tamara Kesselman  
 Kilmartin Charitable Corporation  
 Bishop and Mrs. W. Nicholas Knisely  
 Ms. Didem Kokturk

Larry's Lounge  
 Local 2879 Clerical Union at Rhode Island College  
 Ms. Kathleen Longo and Mr. Kevin Vitale  
 Mr. and Mrs. William Lynch  
 Mr. Ryan Marcotte  
 Massachusetts Business Development Corporation  
 Lt. Governor Sabina Matos  
 Ms. Suzanne McFarlane  
 Mediapeel  
 Mr. Biggs Saloon  
 MSL Facial & Oral Surgery  
 Ms. Patricia Olney-Murphy  
 Dr. and Mrs. Aman Nanda  
 Nixon Peabody LLP  
 Northeast Investment Group, LLC  
 Pioneer Heavy Duty Parts Inc.  
 Mr. Stephen Ramocki PH.D.  
 Rhode Island Foundation: Alice Ward Fund  
 Rhode Island Telephone, Inc.  
 RI House of Reps, RI Senate and Joint Charitable Committee  
 Mr. Anthony Riley  
 Dr. John J. Schibler  
 Mr. and Mrs. Mark C. Simmonds  
 Mrs. Melanie A. Smart  
 Speltz Family Giving Fund  
 St. Martin's Episcopal Church  
 St. Mary and St. Mena Church  
 Studio S Portraits  
 Mr. and Mrs. Barry Sutcliffe  
 The Martone Group  
 Ms. Dolores Turenne  
 United Way of Rhode Island  
 Catherine Vitalo  
 Ms. Marie White

#### **Gifts of \$100-\$499**

AAA  
 AARP Chapter 4580  
 Ms. Sharon Abrahamson  
 Mr. and Mrs. Michael D. Airhart  
 Mrs. Lorraine Albanese  
 Mr. Wayne Aldrich

Mr. Jeffery M. Allen  
 Allied Group  
 Allstate Insurance  
 Mr. Freddie Almeida  
 Alpine Country Club  
 Ms. Melissa Alviti  
 Anchor Bay at Pocasset Office  
 Anonymous (8)  
 Mr. Douglas Anthony  
 Ardente Supply Co., Inc.  
 Raymond Arruda  
 Mr. Greg Arzoomanian  
 Ms. Shipra Ashish Kumar  
 Ms. Sherril Bailey  
 Mr. and Mrs. Joseph Baldasaro  
 Ms. Janice Ballou  
 Bank of America Matching Gifts Program  
 BankNewport  
 Mr. Joseph Baptista  
 Mr. Robert Bartholomew  
 Mr. Leon Bayles  
 Ms. Joanne Baz  
 Ms. Jeanne M. Bazelak  
 Mr. Wayne Beauchamp  
 Ms. Carol Bennett  
 Mr. Joseph R. Beretta  
 Ms. Amy Bergeron  
 Mr. Joel Bessette  
 Mr. and Mrs. Mike Billings  
 Mr. and Mrs. Rick Birkes  
 Ms. Amanda Bishop and Mr. Rob Marshall  
 Mr. and Mrs. Raymond J. Bolster II  
 Boscov's Department Store, LLC  
 Mr. Brian Bouvier  
 Ms. Beverly Bowen  
 Mr. and Mrs. John H. Bracken  
 Dr. and Mrs. William Braden III  
 Mr. Edward Brady  
 Ms. Mary Dee Brillon  
 Mr. and Mrs. Paul Brillon  
 Brown Play School  
 Mr. and Mrs. John E. Buckley  
 Mrs. Louise Buonomano  
 Ms. Lynne Burke  
 Rev. Dr. and Mrs. R. Craig Burlington

**Gifts of \$100-\$499, cont'd.**

Joann Calabro	Mr. James Connor	Ebenezer Baptist Church	Mr. John Hayes
Vincent Calio	Mr. and Mrs. Robert Considine	Ms. Norma Ellis	Mr. and Mrs. Gerard A. Hebert
Mr. and Mrs. Robert Cancillieri	Lee Conti	Mr. and Mrs. Paul R. Enos	The Rev. Higbie and Mr. Norman Higbie
Mr. and Mrs. Edward L. Canner	Ms. Sarah Corbin	ENT and Allergy, Inc.	Mr. and Mrs. Nicole Hofstetter III
Mr. and Mrs. Peter Capalbo	Mr. & Mrs. Robert Corcelli	Mr. and Mrs. Karl F. Ericson	Mr. John Horan and Mrs. Sandra Groves
Mr. and Mrs. James Capaldi	Ms. Ellorie Corcoran	Mr. and Mrs. John Fahey	Mr. and Mrs. Gordon R. Hubbard
Ms. Kathleen Capozzi	Ms. Robin Correia	Family Service of Rhode Island	Mr. and Mrs. George A. Hubert
Ms. Jennifer Capracotta	Corvette Club of RI	Ms. Jennifer Fantozzi	Mr. and Mrs. William Hughes, Jr.
Mr. William Carcieri	Elisabetta Costantini	Mr. Ronald Fasula	Ms. Marissa Iasimone
Mr. Antonio B. Cardi	Mrs. Sharron Costello	Feast and Fettle	Ms. Angelica Igliozzi
Mr. Steven R. Carlino	Ms. Michaela Crudele	Mrs. Joyce Federici	The Honorable and Mrs. William V. Irons
The Rev. Susan and Mr. Brian Carpenter	Cuddles of Hope Foundation	Feinstein Foundation	Ms. Linda R. Isherwood
Mr. David M. Carpenter	Ms. Mairin Cunnie	Mr. Louis Feula	J&B Communications, Inc.
Ms. Elizabeth Carrison	Mr. and Mrs. Richard D'Amore	Finlays Extracts & Ingredients USA, Inc.	Mr. Peter Jacavone III
Ms. Linda Carro	Mr. and Mrs. Christopher Dandeneau	Ms. Olga Fino	Mr. and Mrs. Peter A. Jacavone Jr.
Ms. Erin Carroll	Ms. Seniorina Dasylda	Ms. Margaret Fitzgerald	Mr. and Mrs. Richard Jackson
Mr. Curt Casciano	Davenport's Family Restaurant	FJN Fine Wines	Mr. and Mrs. Stephen L. Jagolinzer
Steven and Lisa Cascione	Mr. Daniel Davis	Ms. Joan Flanagan	Mr. Michael J. Janusonis
Mr. and Mrs. Raymond W. Casey	Ms. Leslie Davis	Mr. and Mrs. John Formica, Jr.	JAS Realty Services, Inc.
The Rev. Christine Cassels	Daymaker	Mr. and Mrs. Robert E. Fortin	Mrs. Cheryl Johnson
Mr. and Mrs. Cavanagh	Mr. and Mrs. Brad Dean	Ms. Lisa O. Fougere	Mr. and Mrs. Michael E. Jolicoeur
Century 21 Shoreline Properties	Dean Warehouse Services	Lauren Fracassa	Ms. Claire Jubb
John Chamberlin	Mr. David DeCubellis	Ms. Abeline Froment	Mr. and Mrs. Arnold Kaufman
Mr. and Mrs. George R. Champagne	Mr. and Mrs. Dennis DeJesus	Mr. and Mrs. John O. Fronce	Michelle Keating
Mr. David Chenevert	Ms. Susan Del Ricci	Gallery of Wine	Ms. Sarah Keisling
Mr. and Mrs. Donald Chevrette	Ms. Melissa Dellena	Mr. Anthony T. Geruso	Mrs. Ronda Kelman
Mr. and Mrs. Bruce B. Chick	Mr. and Mrs. Robert A. Ravenscroft, Jr.	Mr. Gregory M. Geruso	Kristin T. Kennedy, Ph.D.
Deborah Chin	DeQuattro Restaurant Group	Pamela Gibbs	Ms. Susan Kent
Church of the Redeemer	Mr. H.C. Der Vartanian	Mrs. Cinda Gobeille	Allison Kiley Nasin
Mr. and Mrs. Anthony Ciampanelli	Ms. Sara Deshaies	Patti Goldstein	Mr. Joseph Kishfy
Ms. Jennifer Ciavattone	Ms. Theresa L. Desplechin	Good Shepherd Catholic Regional School	Ms. Alexa Kite
The Honorable Frank A. Ciccone III	Mrs. and Mr. Jackson Despres	Mr. David Goodwin	Ms. Emily Kloeblen
Ms. Michele Cinquegrano	Karen DeVenio	Mr. Craig Gordon	Mr. Thomas Klucznik
Mrs. Jessica Clark	Ms. Gina DiChiaro Dodd	Granite United Way	Ms. Maryclaire Knight
Cleantech Services   Ocean State Janitorial Services, Inc.	Mr. David Didonato	Bernice M. Greene	Ms. Anna Kolodner
Mr. and Mrs. John J. Clegg	Mr. Paul DiSegna and Ms. Karen Ferrante	Mr. Stanley Gregory	Ms. Tanja Kubas-Meyer
Mr. and Mrs. Ronald D. Clement	Mr. Steven Dodd	Greylawn Foods	Ms. Linda Kuhn
Mr. Kenneth Cloward	Coreen Dolan	Mrs. Gloria Grygiel	Lake Compounce
Coclin Associates Inc	Ms. Darlene Dorego	Mr. and Mrs. Albert M. Gualtieri	Mr. and Mrs. Anthony Landi, Jr.
Mr. and Mrs. Sean Coen	Ms. Cynthia Dortch	Mr. and Mrs. Sean Hagberg	Mr. Edward Lanni
Coffee Exchange	Mr. and Mrs. Kenneth P. Gay	Mr. John L. Halliwell	The Honorable Justice Sandra Lanni
Robert Colson	Mr. and Mrs. John Drolet	Mr. Michael L. Hanna and Mrs. Julie Mass- Hanna	Mrs. Madelyn LaPlume
Dr. Francis Connor, Jr.	Ms. Cathy Duarte	Mrs. Benjamin P. Harris	Laurel Hill Social & Athletic Club
	Mr. and Mrs. Michael E. Duffy	Mr. Daniel A. Harvey	

Elaine Lauro	Joe Monteiro	Mr. Exum L. Pike, Jr.	Rich and Jane Schweinsburg
Mr. and Mrs. Carl Lisa	June Montgomery	Mr. and Mrs. Kenneth N. Pistacchio	Mrs. Bernard Vincent Scola
Mr. and Mrs. Robert Loiselle	Dr. and Mrs. E. James Monti, Jr.	Mr. and Mrs. William Pitts	Ms. Meredith Serdakowski
Ms. Diane Long	Mr. and Mrs. Joseph R. Mooney III	Mr. and Mrs. Gerald J. Podgurski	Mr. and Mrs. Gary Seyboth
Mr. and Mrs. Frank P. Longo	Mr. Francis P. Moran	Mrs. Carol A. Poncin	Ms. Julie Sharkey
Mr. Matthew A. Lopes, Jr.	John Moran	Ms. Wendy Preston	Siena
Love Divine Church	Mu Kappa Chapter of Sigma Gamma Rho Sorority, Inc.	Providence Bagel - North Providence	Ms. Cynthia Simeone
Mr. and Mrs. John Luca	Ms. Janice Muzzi	Providence College Athletics	Ms. Joan B. Skeffington
Ms. Brianna Lucciola	Nardolillo Funeral Home, Inc.	R&B IT Solutions	Mr. Harry K. Sleicher
Mr. and Mrs. Robert P. Luzzi	Ms. Ellen Nelson	R.I. Welding and Fabricating Co.	Mr. and Mrs. Bernard J. Smith
Mr. John Lynch, Jr.	The Rev. Elizabeth Nestor, M.D.	Mr. and Mrs. Joseph Raheb	Ms. Dawna Smith
Mr. Stephen P. Lynch Sr.	Network For Good	Ms. Susan Raleigh	Ms. Socheata Soeur
Mr. and Mrs. Jeffery M Allen	Mr. and Mrs. David M. Nolf	Mr. Stephen G. Ravo	Mr. Manuel Souza
Mr. and Mrs. Robert Maceroni	North Providence Police Department	Mr. Robert Rebussini	Dr. and Mrs. C. Alan Sowa, D.C.
Macy's	Mr. and Mrs. John A. Nosach	Mr. and Mrs. Mark Rechter	Ms. Lori Spangler
Mr. Frank Maggiacomo	Novartis Pharmaceuticals Corp.	Frederick Reinhardt	Mrs. Catherine J. Sprigg
Mr. and Mrs. Anthony J. Maglione	Mr. and Mrs. Stephen Nugent	Renaissance Alliance Lodge #1966	Mr. and Mrs. Joel B. St. Germain
Ms. Mary L. Maloney	Mr. Michael O'Donnell	Mr. Gregg Reposa	Mr. Paul Stasiuk
Mr. and Mrs. Don Manuppelli	Brigid O'Fallon	Rhode Island Coalition for Children and Families	Mr. Raymond Steele
Mr. and Mrs. Thomas D. Marandola III	Mr. and Mrs. John Oliver	Rhode Island Medical Imaging, Inc.	Stephen Olney Elementary School
The Rev. Alvin Marcetti	Mr. and Mrs. Arthur J. Olney	Mr. Ernest Ricci Jr.	Ms. Joann Stevens
Mr. and Mrs. Robert A. Maresca	Mr. and Mrs. Douglas T. Olney	Mr. and Mrs. Kenneth A. Ricci	Ms. Joyce Stevens
Ms. Susan Marinosci	Mr. Stephen Ormerod	Mr. and Mrs. Kenneth Riccio	Mrs. Irene Suarez
Marrinan & Associates	Ms. Kathleen Orovitz	RISCPA/RI Business Forum	Jillian Sullivan
Massage Envy	P. Ronci Machine Company	Rising Sun Lodge #30 AF & AM	Ms. Joanna Susin
Material Sand and Stone Corp.	Dr. and Mrs. Frank Paletta	Ms. Suellen Rizzo	Emily Swiatek
Mr. and Mrs. John McCormick	Mr. and Ms. Bob Parant	Robert A. D'Amico Co. Inc.	Mr. Joseph Swift
Mr. Eric McDuffee	Ms. Hope Parish	Robinson Green Beretta Corporation	Ms. Luanne Tanzi
Mr. and Mrs. Ed J. McElroy, Jr.	Paster & Harpootian, Ltd.	Ms. Karen Robitaille	Ms. Erin Taylor
Mr. and Mrs. William P. McGillivray	Mr. and Mrs. Mark A. Pavao	Ms. Britny Rogala	The Benevity Community Impact Fund
Ms. Anna McGreen	Emily Peel	Mr. and Mrs. Mark Russell	The Business Development Company
McGunagle Hentz, PC	Peluso Properties	Mr. Ronald D. Russo	The Diocese of Rhode Island
Mr. and Mrs. Richard P. McKee	Dr. Jessica L. Pepitone and Atty. Christopher D. Graham	Mr. and Mrs. Michael Ryan	The Neighbor's Kitchen & Bar
Ms. Keryn McKeon	Costas Perdikakis	Mr. and Mrs. Raymond M. Ryan	The Preservation Society of Newport County
Ms. Cynthia McLaughlin	Ms. Elisabeth Peterman	Mr. and Mrs. Paul J. Rylander, Jr.	The Sentinel Media Group
Mrs. Wanda McLaughlin	Mr. Brian Petit	Saccoccio and Associates, Inc.	The Valley Breeze
Mr. and Mrs. William McManus	Patricia Petitpas	Mr. Randall Sacilotto	Courtney Thibeault
Mr. and Mrs. Richard Mellion	Dr. and Mrs. Joseph E. Pezza	Salvatore Mancini Resource and Activity Center	Mr. Alfred Thibodeau
Ms. Laura Mello	Mr. and Mrs. Bryant A. Phillips	Mr. and Mrs. Salvatore Santilli	Ms. Deborah Thibodeau
Mr. and Mrs. Anthony F. Merlino	Ms. Therese Picard	Ms. Kim Savastano	Mr. and Mrs. David J. Tracy
Ms. Barbara Miletta	Ms. Victoria Picinich and Mr. Chris Revill	Mr. and Mrs. Salvatore Savastano	Tri-County Community Action Agency
Mr. and Mrs. Charles E. Millard, Jr.		Mr. Joseph L. Sbardella	Mr. John Tridento
Carol Mingo-Revill			
Mobile Mic Studios			
Mr. and Mrs. Paul Monahan			

**Gifts of \$100-\$499, cont'd.**

Mr. and Mrs. Peter Troy  
 Mr. Paul Tucker  
 Mrs. Maria Tudino  
 Mr. and Mrs. Thomas R. Tullie  
 Ms. Karen A. Tyszkowski  
 United Commercial Travelers  
 of American #67  
 Mr. and Mrs. Paul Valliere  
 Harry Vartanian  
 Mr. and Mrs. Peter Vassilopoulos  
 Mr. Raymond H. Verno  
 Vikon Properties Corp.  
 Ms. Suzanne Vitalo  
 Mr. and Mrs. Peter Voccio, Jr.  
 Mrs. Mamie Wakefield  
 Mr. Andrew Wehner  
 Mr. and Mrs. James Wendell  
 Mr. Peter Weyman  
 Ms. Carol M. Whitman  
 Ms. Jane Willis  
 Mr. W. Grant Willis and  
 Ms. Bonnie Galvin  
 Kelvin Wong  
 Mr. and Mrs. Richard F. Wontka  
 Ms. Sally Worrall  
 Mr. and Mrs. Robert W.  
 Wotherspoon  
 Mr. and Mrs. David Wrenn  
 Ms. Karen Xavier-Dacunha  
 Mr. Aaron Yaras  
 Mr. and Mrs. Carlos Zabala  
 Ms. Barbara Zacharczy  
 Gretchen Zeil  
 Ms. Lisa Zompa

**Gifts of \$1-\$99**

Ms. Melissa Abbondanza  
 Ms. Josephine A. Actis  
 Mr. and Mrs. John Affleck  
 Mr. and Mrs. Steven P. Albert  
 Ms. Donna Albertelli  
 Ms. Karen Allen  
 Amazon Smile  
 Amica Companies Foundation  
 Mr. and Mrs. Louis Ando  
 Mr. and Mrs. John M. Andreoni

Anonymous (10)  
 Mr. Joseph W. Antonio and  
 Ms. Katherine E. O'Connell  
 Ms. Lydene Armstrong  
 Miss Jane Arthur  
 Ms. Sona Arzoomanian  
 David Baccaire  
 Noel Bailey  
 Ms. Karen Balch  
 Mr. and Mrs. Peter G. Barilla  
 Dr. and Mrs. Nicholas D. Barone  
 Ms. Kathryn Barrett  
 Rev. Jim Bartholomew  
 Ms. Sandra Bell  
 Ms. Ruth E. Bennett and  
 Ms. Doris Landry  
 Ms. Cynthia Bertoncini  
 Ms. Sophie-Lori Betley  
 Ms. Amilee Bianco  
 Ms. Amanda Bido  
 Mr. and Mrs. Eugene Blair III  
 Mr. and Mrs. K. Kenneth Bogosian  
 Ms. Tracey Boyajian  
 Ms. Heather Boyce  
 Mr. Jeffrey Brasil  
 Ms. Andrea Breadheft  
 Ms. Caitlyn Briggs  
 Mrs. Barbara S. Brown  
 Carolyn Brown  
 Ms. Martha R. Brown  
 Mr. and Mrs. Stephen F. Bucci  
 Mr. and Mrs. Leo E. Bulgarelli  
 Ms. Catherine Burke  
 Ms. Linda Butera Noble  
 Mr. James Callary and Ms. Jean  
 McCormick  
 Mr. and Mrs. John Campanini, Jr.  
 Mr. and Mrs. Phillip Campbell  
 Mr. and Mrs. Louis Campisani  
 Mrs. and Mrs. Robert Capello  
 Ms. Karen E. Cappelli  
 Ms. Bailey Carey  
 Gail Carrier  
 Ms. Melissa Casey  
 Ms. Kristen Cashman  
 Ms. Lisamarie Cashman

Ms. Nancy Nelson Caswell and  
 Ms. Catherine E. Curtis  
 Ms. Liz Catucci  
 Ms. Gail Cerrito  
 Mr. and Mrs. William Charland  
 Mr. Marcus J. Charlemagne  
 Ms. Roberta A. Chevoia  
 Mr. and Mrs. John B. Christy III  
 Church of the Good Shepherd  
 Mr. and Mrs. Anthony Ciacciarelli  
 Mrs. Delia Cinieri  
 Mr. and Mrs. Henry Cipriano, Jr.  
 Ms. Jennifer Clark  
 Ms. Susan Clarke  
 Ms. Kathleen Cloutier  
 Mr. and Mrs. Joe Codega  
 Ms. Tiffany Coderre  
 Miss Liz Coleman  
 Ms. Michelle Colicci  
 Mr. Tyler Collins  
 Lisa Connell  
 Ms. Sandra Conroy  
 Ms. Christine Cordice  
 Mr. James Corsair, Jr.  
 Mr. and Mrs. James R. Courtney  
 Mr. and Mrs. Jose Covacha  
 Ms. Dawn Crandall  
 Mr. and Mrs. James H. Crawford, Jr.  
 Ms. Inez Crowley and  
 Ms. Patricia Crowley  
 Virginia Cullen  
 Justine Currie  
 DAMES Mentoring  
 Mr. Joseph A. D'Angelo  
 Ms. Jill Danner  
 Mr. Dominic Dascoli  
 Dave and Busters  
 Mr. and Mrs. Robert E. Davis, Jr.  
 Ms. Susan Davis  
 Mr. and Mrs. John Dawson  
 Mr. Ralph Deangelis  
 Dr. Janice DeFrances  
 Ms. Anna Deruosi  
 Ms. Kelly A. Dibiasio  
 DiMartino & Associates  
 Mr. and Mrs. Ronald M. Dion

Mr. and Mrs. Edward J. DiOrio  
 Ms. Roslyn DiStefano  
 Ms. Shelby Doherty  
 Mr. and Mrs. George Donahue  
 Mr. and Mrs. James M. Donnelly III  
 Ms. Joyce J. D'Orsi  
 Mr. Timothy Draper  
 Mr. John Duhamel  
 Ms. Darcy Dunn-Cricco  
 Ms. Elaine Durato  
 Mr. and Mrs. Charles J. Dyer  
 Mrs. and Mrs. Paul V. Eacuello  
 Eastern Propane  
 Ms. Tascha Edwards  
 Ms. Angela Ellis  
 Ms. Jennifer Ellis  
 Elvira's Gift for Hope Foundation  
 Mr. and Ms. Kevin England  
 Ms. Laurie Farkas  
 Ms. Maria D. Ferreira  
 Mr. and Mrs. Matthew Ferriter  
 Mr. Aaron J. Ferro  
 Mr. Anthony V. Fiore and Ms.  
 Diane Dawson  
 Ms. Judy Fischbach  
 Mr. James Flanagan  
 Mr. and Mrs. David J. Florence  
 Ms. Lynn Flynn  
 FM Global Foundation  
 Ms. Elizabeth Foley  
 Cindy Fracassa  
 Ms. Kristen Free  
 Mr. and Mrs. Richard Gabaree  
 Ms. Collette Gagnon  
 Mrs. Peggy Gale  
 Ms. Lucille Gallagher  
 Mr. and Mrs. Robert Gay Jr.  
 Mr. and Mrs. William Gemma  
 Mr. Marc D. Gendron  
 Mrs. Stella Gentile  
 Ms. Sandra Giacin  
 Ms. Joyce Ginolfi  
 Mr. & Mrs. Howard Goldstein  
 Ms. Antonietta Gonegonto  
 Ms. Liz Gonzalez  
 Mr. and Mrs. James Gorman



Mr. and Mrs. William F. Gosselin	Ms. Julia Krasnow	Mr. and Mrs. David A. Moreira	Mr. Sean Rock
Mr. and Mrs. Ray Gruneberg	Mr. Thaddeus Kresse	Mr. and Mrs. David J. Moretti	Roger Williams Park Zoo
Mrs. Mary E. Hamel	Ms. Sandra Lachapelle	Mr. and Mrs. Dennis G. Morsilli	Mr. and Mrs. Douglas J. Romano
Mr. and Mrs. Bruce R. Hanson	Ms. Jennifer LaFlamme	Richard T. Moses, Esq.	Ms. Lisa Romano
Ms. Lillian Hargrove	Mr. Peter H. LaFreniere	Mr. and Mrs. Theodore J. Moskala	Mr. Michael Rossi
Mr. and Mrs. Robert W. Harris	Mr. and Ms. Wayne Langellier	Dr. and Mrs. Samir Moubayed	Ms. Jennifer Rousseau
Ms. Judith Hart	Lanzi Furs, Inc.	Mystic Aquarium & Institute for Exploration	Mrs. and Mr. Sven Ruin
Ms. Carol A. Hartley	Last Chance MC	Nettie's Kettle Corn	Mr. and Mrs. Arthur S. Russo
Mr. Robert S. Hayes	Ms. Stacey Lehrer	Mr. and Mrs. David Noren	Mr. and Mrs. Richard R. Sagnella
Mr. and Mrs. Mark Hayward	Ms. Kelsey Lemoine	North Providence Tire and Auto Center	Ms. Donna F. Sakkinen
Mr. Patrick Hayward	Ms. Marlene A. Lepore	Ms. Jane O'Farrell	Mr. Guido Salvatore
Mr. David Hazebrouck	Brian Lombardi	Ms. Alicia Olszewski	Ms. Marie F. Sammartino
Ms. Kristina Hodgkinson	Dr. Elizabeth Lowenhaupt, M.D.	Mr. Donald Osley	Mr. and Mrs. William T. Sand
Ms. Caileigh Holland	Ms. Marie Lucciola	Mr. and Mrs. Raymond A. Pacia	Mr. and Mrs. Antonio Santilli
Mr. and Mrs. Kenneth W. Horn	Ms. Kathleen Maggiacomo	Mrs. Anna Pagano	Mr. and Mrs. Melissa Santoro
Ms. Caitlin Howle	Ms. Jaycee Maldonado	Mr. Christopher Page	Mr. and Mrs. Stuart Schloss
Mr. David Hughes	Ms. Kathleen Malin	Mr. and Mrs. Frank Pallotta, Jr.	Ms. Maureen Sciacca
Ms. Paula Iacono	Ms. Alana Maltezos	Mr. and Mrs. Peter J. Pallozzi	Ms. Carla Sepe
IDC, Inc.	Mr. Ron Mangiantine	Mr. and Mrs. Edward Pearl	Ms. Kathleen Shea
Mr. and Mrs. Augustine Idowu	Mr. Marc Marandola, Jr.	The Rev. Ashley Peckham	Mr. and Mrs. Stephen Shorrock
The Honorable and Mrs. Daniel J. Issa	Marian J. Mohr Memorial Library	Ms. Sandra J. Peckham	Ms. Aleece Silva
J DTEK LLC	Anthony M. Markey	Mr. and Mrs. Brian V. Pellegrino	Daniela and Nicole Simone
Claire Jabour, Esq.	Mrs. Diana M. Marro	Ms. Theresa M. Pennacchia	Jayne Simoneau
Mrs. Florese A. Jacome	Ms. Christina Marsland	Perennial Planters	Mr. and Mrs. Edward K. Sliney
Ms. Heidi R. Janssen	Ms. Lynn Martin	George Perras	Mr. and Mrs. Mark Sloan
Mr. and Mrs. Robert Jeffrey	Ms. Lisa Masterson	Mr. and Mrs. Mario Petrarca	Mr. Fred Smith
Norma Jenckes	Mr. and Mrs. John Mathias	Mrs. Patricia Picinich	Mr. and Mrs. Richard T. Smith
Ms. Michelle Jessop	Mr. Christopher Maxwell	Mr. Thomas Picinich	Ms. Marie Snyder
Ms. Denise Jodoin	McBride's Pub	Mr. and Mrs. John M. Pitocco	Mr. Stephen Soulliere
Mr. and Mrs. Bret J. Johnson	Ms. Michele McCaughey	Ms. Alicia Plouffe	Ms. Camille S. Spicola
Lori Jordan	Mr. Brian McGinnis	Dr. Barry A. Plummer	Ms. Diane Spooner
Gail Kagan	Ms. Linda McGuire	Potvin Electric Inc.	Ms. Maria L. Stein
Mr. and Mrs. Whdeh Kaliff	McGunagle & Reidy	Ms. Jane Przybyla	Ms. Ashley Stetson
Ms. Carleen Kannar and Ms. Michelle Alves	Ms. Patricia A. McIntyre	Mrs. Barbara Ray	Mr. Kevin Stiles
Mr. Frank J. Karpinski	Miss Sara McMullen	Re/Max Professionals	The Stop & Shop Supermarket Company
Ms. Lynn Kassab	Ms. Peg Meade	Ms. Jena Remka	Mr. and Mrs. Frederick Swain
Mr. and Mrs. Kevin Kelley	Ms. Angelina Medeiros	Mr. and Mrs. Joseph Renzulli	Mr. and Mrs. William J. Swift
Ms. Winifred A. Kelley and Ms. Marie Kelley	Ms. Carissa E. Meehan	Mr. and Mrs. Ernest Rheaume	Ms. Mary Beth Swiszc
Ms. Dana Kennealy	Mr. and Mrs. Thomas E. Mellen	Ms. Antonia Ricci	Ms. Kristy Tankersley
Ms. Sandra Kenney	Mr. Martin Mercorelli	Ms. and Mrs. Steven Richards	Mr. and Mrs. Michael Tartaglia
Mr. and Mrs. Bernard P. Kiernan	Ms. Mary E. Messina	RISD Museum	Mr. and Mrs. Paul Taubman
Mr. Robert J. Kilduff	Ms. Elida Mezini	Ms. Danielle Rizza & Rob Gering	Ms. Esperanta Telisma
Mr. and Mrs. Peter Kingman	Dr. and Mrs. John Miele	Mrs. Deborah Rizza	Dr. and Mrs. Edward S. Thomas
Mr. and Mrs. John A. Kocon	Mr. and Mrs. William R. Miller Jr.	Rob Levine & Associates	Mr. and Mrs. Steven E. Thomas
	Mr. and Mrs. Jon A. Mills	Mr. Derrick Robinson	Mr. Mike Tillinghast
	Ms. Emma Moralez		

**Gifts of \$1-\$99, cont'd.**

Mr. and Mrs. Allen W. Tinkham

Mr. Mark S. Titus

Tony's Big Pizza

Ms. Melissa Travis

Mr. Karl Treen

Mr. Anthony Tucciarone

Mr. and Mrs. Michael Turner

Ms. Eileen Tweedie

Two Little Fish Restaurant

Ms. Jill Tyler

Mr. and Mrs. Manuel J. Vales III

Ms. Helen Vaughn

Ms. MaryLou Ventura

Mrs. Dorothy Villani

Ms. Kelly Villanueva and  
Mr. Forrest Crooks

Mr. Robert Villucci

Mr. and Mrs. David Vinacco

Ms. Lori Viner

Ms. Nicole Walker

Mr. and Mrs. Eugene R. Wallin

Water Wizz Water Park

Mr. and Mrs. William Waters

Mr. and Mrs. David D. Watterson

Ms. Judith Watts

Ms. Alicia Wells-Smith

Heather Welshman

Mr. and Mrs. Bruce Wolpert

Mr. and Mrs. Richard  
Wolstencroft

Mr. and Mrs. Richard D. Worrell

Ms. Krista Yablin

Ms. Donna Yeadon

RYourCause

Mr. and Mrs. Robert Zagrodny

Miss. Linda A. Zampini

Mr. and Mrs. John Zompa, Jr.

You can support the youth, adults, and families that St. Mary's serves by donating online at [www.smhfc.org/donate](http://www.smhfc.org/donate) or calling 401-353-3900 and asking for the Development Director.

# We could not help so many families without you!

St. Mary's Home for Children wishes to express our deepest gratitude to our supporters whether they be government, individuals, organizations, businesses or foundations. Your support directly improves the lives of hundreds of children and adults in Rhode Island each year.

## Our Mission

Partnering with youth, adults, and families, St. Mary's Home for Children fosters resilience and potential through a continuum of innovative residential, community-based, education, and prevention services.



420 Fruit Hill Avenue, North Providence, RI 02911-2647  
401-353-3900 | [www.smhfc.org](http://www.smhfc.org) |    

